

# GLOBAL SOLUTIONS

---

*Comprehensive solutions for  
Industrial Automation....*



# The Company

Global Solution's forte – Knowledge, coupled with Engineering capabilities and Project Management, helps end users rely on them as a one stop shop for all of their automation requirements, ranging from Panel Assembling, C&I to Level 3 applications and custom solutions, ideally meeting or exceeding customer expectations.

**GLOBAL SOLUTIONS** is a proprietorship company and the same was incorporated in the year **2011** with a view of creating the forte in engineering products, automation and instrumentation solutions.

After the year **2016** expanded the business associations with parent companies and brands such as ***Honeywell, Drager, Weidmuller, Eaton-MTL, UL Group, Oring, HMS, Procentec, Helmholtz,, etc.*** This are well known brand in Industrial automation.

We leverage on our expertise and experience to offer customized solutions and services on various makes of Industrial Automation products and systems.

## Our Vision

We believe our success is our strong set values which include **Dedication, Innovation and Excellence.**

GLOBAL SOLUTIONS strive to offer its customer's one stop innovative and simple solutions for their unique needs and prides itself on being extremely optimistic and dedicated in problem solving situations.



# Our Offerings

## Products, Solutions & Services

### Honeywell

- ✓ Field Instruments
- ✓ Control System
- ✓ Liquid Metering
- ✓ Gas Metering
- ✓ Safety Systems

### TURCK

- ✓ Fieldbus Technology
- ✓ Industrial Control
- ✓ Interface technologies
- ✓ Machine Safety
- ✓ Sensors

### Dräger

- ✓ Fixed Gas Detector
- ✓ Portable Gas Detector
- ✓ Industrial Safety Solutions

### Eaton

Powering Business Worldwide

- ✓ IS / Non-IS Isolator
- ✓ Safety Barrier
- ✓ HART Multiplexers
- ✓ IS Fieldbus Solutions
- ✓ Surge Protection
- ✓ HMI & Visualization

### BNF TECHNOLOGY

- ✓ Real Time Monitoring
- ✓ Alarm Management
- ✓ Dash Board
- ✓ Spreadsheet
- ✓ Mimic
- ✓ Predictive Analytics



UL GROUP  
Nothing's Complex

- ✓ Relay Module
- ✓ Field Interface Module
- ✓ Prefab Cables
- ✓ Panel Accessories
- ✓ Passive Interface Module

### Helmholz COMPATIBLE WITH YOU PROCENTEC

- ✓ Profibus Repeater
- ✓ Profibus connector
- ✓ Profibus Analyzer
- ✓ Profibus & ProfNet Coupler
- ✓ Diagnostic tools

### Weidmüller

- ✓ *Fieldbus Technology*
- ✓ *Industrial Control*
- ✓ *Interface technologies*
- ✓ *Machine Safety*
- ✓ *Sensors*
- ✓ *Connectivity*
- ✓ *Cloud Solutions*

### ORing

- ✓ Ethernet Switch
- ✓ Media Converter

### HMS

- ✓ Protocol Converter
- ✓ Gateways
- ✓ IT/OT Gateways

## Field Instruments

### Pressure Transmitter

SmartLine Pressure Transmitters Feature industry-leading performance, unique features that lower total cost of ownership and Smart Connection Suite for the best control system integration.

### Level Transmitter

Level Transmitter portfolio includes Guided Wave Radar and Non-Contacts Radar technologies to provide solutions to the industries level monitoring needs.

### Temperature Transmitter

Smart Temperature Transmitters and Probe Assemblies helps users monitor and protect asset health, comply with environmental regulations, reduce energy waste, and improve throughput and safety.

### Multivariable Transmitter

SmartLine Multivariable Transmitters extend its proven smart technology to the simultaneous measurement of three separate process variables according to standard industry methods for air, gases, steam and liquids.

### Flow Meters

VersaFlow flow meters provide accurate measurement of mass flow, density, volumetric flow rate and temperature for gases, pastes, liquids with low viscosity and applications where users are unwilling or unable to cut into the process measurement line.

### Field Instruments Configuration Tool

Honeywell supports the ability to easily configure, calibrate, diagnose and troubleshoot field instruments through handheld tools or host systems.

### RMA Remote Meter Assemblies

RMA Remote Meter Assemblies provide process measurement values in remote locations where the integral meter in the field instrument is difficult to view.

### Wireless Transmitters

One wireless instrumentation offering includes the new SmartLine Wireless Pressure transmitter portfolio, the field proven XYR 6000 wireless transmitter offering, and the OneWireless Adapter for enabling wireless communication with HART transmitters.



## Control Valve

### Series 9110 Single/Double Seated Globe Valves

The Series 9110 control valves has been developed to provide a cost effective solution to the “final control element” used in modern plants. The valve design combines the successful high integrity features of the series 9110 with a high capacity, economic design philosophy as well as excellent control.

### Series 9120 Seated Angle Valves

The Series 9120 Angle-type control valve is indispensable to control fluid of high differential pressure, slurry, high viscosity, or adhesive. They are provided with a number of features such as low resistance of passage, antiwear quality within the valve, and easy maintenance and inspection.

### Series 9130 Mixing / Diverting 3-Way Valves

Three-way type control valves are used for controlling the fluids mutually to three directional pipings, i.e., mixing service and diverting service.

### Series 9210 High Performance Butterfly Valves

The series 9210 butterfly valves has been developed for a large number of applications throughout process industries triple eccentric. The series 9210 high performance butterfly valves is mainly used for the control of fluids flowing in large valve at low differential pressure. It offers additional advantages such as simple structure and low cost.

### Series 9310 V-Notch Ball Valves

Series 9310 Valve is Top Entry, Full Bore, Trunnion, and stem ball type v-notched ball valve, which is exclusively designed for excellent proportional control as much as globe type control valves and manual valves. Series 9310 have special shape of disc which is suitable for accurate throttling control and on-off service not only general fluids but also critical condition in powders, slurry, gummy, fibrous material and other fluids having special characteristic

### Series 9410 Full Bore Seated Ball Valves

Series 9410 ball valves are off-the-shelf standard valves that incorporate many special features. This series of valves is designed for both pressure and vacuum service. The valves have multiple fire safe guards : a secondary metal seat; a blowout-proof stem ; and a static electric grounding device. The Valves are available with a full bore and reduced bore.

## Positioners



MH-750



MH-740



MH-700





## Control Valve

### Series 6110 Multispring Diaphragm Actuators

The Series 6110 Diaphragm actuators has been designed to control accurately the flow and pressure of fluid in response to demand of fine process control as well as various plant systems. These actuators have been developed for powerful and high performance pneumatic actuating of linear motion valves as well as rotating valves. It consist of four spring which are produced for high stiffness that is defined as the ability of the actuator to with stand suddenly changing dynamic force of fluids acting on the valve stem.

### Series 9120 Seated Angle Valves

The Series 6200 Rotary piston actuator is designed to operate rotating valves, such as Ball valves, Butterfly valves and V-Notch valves for throttling or on-off service. This actuators are unique linkage type which converts linear motion torque at beginning which usually corresponds to the closed position of valves, and another peak of torque is produced at 60 degree of valves which correspond to the dynamic torque.



## Gas (Ultrasonic Meters)

### Q.Sonic – max

The ultrasonic gas flow meter Q.Sonicmax is a multipath ultrasonic gas flow meter utilizing the most accurate acoustic path configuration available to the market. Market leading ultrasonic metering technology, advanced diagnostics and easy-to-use software deliver the highest levels of accuracy, confidence, cost-effectiveness and long-term reliability.

### Q.Sonic – plus

Whether prices are high or low, the metering system is a critical element in the natural gas process, providing the cash register of the business. Market leading ultrasonic metering technology, advanced diagnostics and easy-to-use software deliver the highest levels of accuracy, confidence, cost-effectiveness and long-term reliability.

### TwinSonic-plus

Honeywell TwinSonic plus ultrasonic gas meters use market-leading technology to deliver accuracy and valuable insight to custody transfer applications in the natural gas value chain.

## Flow Computers

High Performance flow Computers with modular software approach; Electronic DSfG volume Correction; integrated data logger etc....



## Gas (Analysis Equipment)

### Gas Chromatography Analyzer (EnCal 3000)

Honeywell Elster® EnCal 3000 is a gas chromatograph analyzer specially designed for natural gas energy measurements. This state-of-the-art analyzer uses chromatography components based on the latest Micro-Electro-Mechanical Systems (MEMS).

### Gas Quality Analyser (GasLab Q2)

The GasLab Q2 is a gas quality analyser for natural gases, it is flame free, works quickly and continuously. It determines the calorific value, Wobbe index and other parameters of the sample gas.

### EnCal 3000 Controller

Control unit for EnCal 3000 GC for installation in safe areas



## Terminal (Loading & Additive Products)

### 1010 Batch Controller

1010 Load Computer is a loading system designed for loading gantries of petroleum refineries to control and manage the custody transfer of petrochemical products onto road tankers, railcars and barges

### Fusion4 MSC-L Batch Controller

Fusion4 MSC-L is the world's most advanced multi stream controller for loading operations. It provides custody-transfer approved loading for up to 24 meter streams simultaneously in road loading, rail loading, marine loading and tank farm operations.

### Additive Injection Solutions

Our Additive injection system assure the terminal operation that high quality and safety standards are being met through safe and accurate dosing of additives to fuel

### Enraf Flexline Radar

Our Additive injection system assure the terminal operation that high quality and safety standards are being met through safe and accurate dosing of additives to fuel

### Enraf Flexline Radar

Enraf Servo 954 advances the art of tank gauging with proven measurement technology and advance software algorithms for even better performance.

### Enraf Flexline Radar

Tank farm operators rely heavily on their tank gauging and inventory monitoring systems. Honeywell's new communication interface, CIU 888, ensures the availability of accurate and reliable tank measurement and calculated inventory data.



# Control Systems

## PlantCruise By Experion (DCS)

PlantCruise by Experion is a proven Distributed Control System (DCS) leveraging the Experion PKS system, which is purpose-built to fit users' applications and is easy-to-use and configure. This system enables users to: Maximize uptime and improve plant reliability and efficiency.



## ControlEdge UOC (DCS)

Honeywell brings its extensive DCS power to a smaller, more flexible form factor. The modular Unit Operations controller (UOC) extends the Experion control environment to a form factor that fits in even the smallest plant. The UOC also provides a standalone, fully functioning class-based batch system without requiring a separate batch server.



## ControlEdge PLC

ControlEdge™ PLC, when combined with Experion®, reduces integration costs for balance of plant operations, minimizes downtime, decreases risk with embedded cyber security, and lowers total cost of ownership through extended system lifecycle.



## Master-Logic PLC

MasterLogic Programmable Logic Controller (PLC) is a modular, scalable rack-based industrial controller delivering powerful performance in a control application. It's superior performance enables faster discrete and sequencing control, while saving space and operations costs with its small & compact modular size, ML-50 and ML-200 (Redundant and non-Redundant).



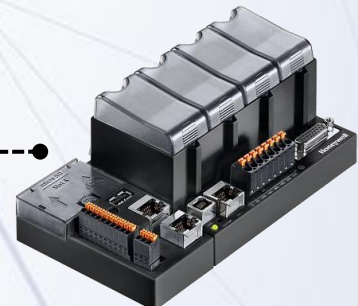
## ControlEdge RTU

ControlEdge™ RTU is a powerful, modular and scalable controller capable of all remote automation and control applications. It helps facilities effectively manage complex remote automation and control applications while converting data from complex automation systems into relevant, actionable information.



## ControlEdge PCD

ControlEdge™ PCD comes with enhanced cybersecurity and high-level language programming and is compatible with its native PCD3 I/O family. It's scalable design, compact form factor, fast execution time, pre-defined functions, certification, superior price to performance ratio and state-of-the-art.



## Honeywell VFD

Honeywell Variable Frequency Drive (VFD) is a general-purpose solution that meets automation and energy efficiency requirements across industrial segments and process applications, from small pumps to large compressors.







**Safety Manager SC (SIL-3)**

Safety Manager SC is a logical evolution of the Safety Manager providing several improvements as the design changes to the C-Series form factor including an S300 processor, Safety Digital IO (SDIO) and offline simulation capability.

It enables compliance with the latest global safety and cyber security standards, providing maximum reliability and availability and leading to a safe environment, increased production and operational savings.



**ControlEdge HC900 (SIL-2)**

The ControlEdge™ HC900 process automation controller is an ideal control solution for user needs ranging from thermal control in boilers, furnaces, kilns, & dryers to unit processing in pharma, chemical, bio-fuel, pilot-plant & other applications



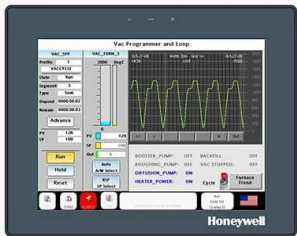
**HCiR (Honeywell Control Interface)**

The Honeywell HCi series provides an advanced, user-friendly and competitive interface that enhances controllers' performance. It HCi reduces engineering time with convenient functions to import databases, reducing users' total operating costs.



**Experion® Panel PC**

The Experion® Panel PC brings Experion HMI outside the control room in a flexible way for demanding industrial control applications. It is an industrial grade Touch Panel PC based on robust, easy to maintain hardware that is used with proven Experion Human Machine Interface (HMI).



**900 Control Station**

Honeywell's 900 Control Station complements the ControlEdge™ HC900 PAC by providing an advanced, user-friendly and cost-effective interface that enhances the controller's performance and improves operator efficiency.



**Experion® HS (SCADA)**

Experion® HS is a powerful software platform that incorporates innovative applications for Human Machine Interface (HMI) and supervisory control and data acquisition (SCADA).

Experion HS enhances operator response and provides readily available information and data for operator effectiveness. It improves safety management of critical processes and equipment. In addition, productivity tools enable faster and more accurate engineering with automatic documentation creation and improved online modifications and validation, resulting in better engineering and maintenance efficiency.

# Fixed Gas Detector

In an industrial facility, hazardous substances are part of the daily routine. Dräger's comprehensive range of fixed gas detectors and controllers includes a broad spectrum of Dräger sensors for measuring toxic and flammable gases and vapors as well as oxygen.

We don't stop there: Our consultative approach means that we can help assess, define and implement complete and individualized fixed gas detection systems for every workplace. When you have the right gas detection system in place, your employees stay safe and work continues smoothly.

## Detection of Flammable Gases

The Storage and Processing of Flammable gases and vapours can lead to unintended accumulations of substances that pose a risk. Dräger transmitters detect such gas clouds even in the smallest concentrations and set off an alarm.

- ✓ Radiation Flame Detectors
- ✓ Visual Flame Detection

## Detection of Toxic gases

Exposures to toxic hazardous substances can cause serious damage to health even in low concentrations. Therefore, any exceeding of thresholds must be immediately followed by effectual measures.

- ✓ Wired Point Detection
- ✓ Area Monitoring
- ✓ Wireless Point Detection

## Detection of Flames and Fire

Reliable detection of hydrocarbon and hydrogen-based fires is a necessity in the chemical industry. Flame detectors have to provide extreme short response time and a high reliability against false alarms.

- ✓ Wired Point Detection
- ✓ Area Monitoring
- ✓ Wireless Point Detection

## Control Systems for monitoring Gases and Vapours

Control systems and control units enable the representation, evaluation and recording of events. They should be flexible extendable and be compatible to any existing devices belongin to the system.

- ✓ Controller
- ✓ Modular Controllers
- ✓ System Components





## Portable Gas Detector

### Single-gas Detector

If the danger of toxic gases or vapours can be narrowed down to a single gas or leading substance, single-gas measuring and warning devices are the ideal solution for personal monitoring in the workplace. Our single-gas detectors are small, robust, and ergonomic.

### Multi-gas Detector

The new generation of multi-gas detectors are ideal for personal protection, area monitoring, confined space entry (CSE) as well as safety measurements of shafts, channels or tanks. These portable multi-gas detectors deliver reliable measurements, while durable sensors designed in-house guarantee maximum safety coupled with extremely low operating costs. S

### Gas Detection Tube

Gas detector tubes are one of the classic measurement methods used for gas analysis today. This versatile system can be used in numerous applications in industry, firefighting and disaster management, in the laboratory, for environmental protection and in many other areas. We also offer an airflow tester and different Dräger-Tubes test sets.





## Sensor

### Temperature Sensors

The new series TS+ temperature sensors ensure reliable and reproducible measurement of process temperatures in industrial applications.

### Flow Sensors / Flow Meters

Flow monitoring is a procedure that demands a reliable and reproducible surveillance of limit values and flow patterns. Flow sensors detect critical deviations of the flow rate of liquid and gaseous media.

### Level Sensors

Users can utilize the respective advantages of different measuring principles for level detection or continuous level measurement.

## Fieldbus Technologies

### I/O Systems

Our modular fieldbus and remote I/O-systems offer a comprehensive range of solutions for factory and process automation with interfaces for the fieldbus protocols PROFIBUS-DP, DeviceNet, CANopen, Modbus TCP, Ethernet/IP and PROFINET. Excom is a remote-I/O-system in IP20 for Ex and non-Ex areas.

### I/O Modules

For factory automation we offer compact fieldbus I/O-modules for PROFIBUS-DP, DeviceNet, CANopen, INTERBUS, AS-interface, Modbus TCP, Ethernet/IP and PROFINET. The IP67-modules for use in harsh environments have glass-fiber reinforced plastic housings and metal-connectors, are fully potted, vibration and shock-proof.

### I/O Systems

We offer the full range of solutions for process automation tasks implemented with FOUNDATION fieldbus and PROFIBUS-PA: The portfolio includes power supplies, power conditioners, multibarriers as well as junction boxes in IP20 and IP67.



**TURCK**  
Your Global Automation Partner

# Sensors

## Inductive Sensors

Inductive sensors detect metal objects contactless and wear-free. For this, they use a high-frequency electromagnetic AC field that interacts with the target.

## Photoelectric Sensors

Photoelectric sensors and systems use visible or infrared light to detect many different kinds of objects without contact, regardless of their material, quality and consistency.

## Capacitive Sensors

Capacitive sensors work contactless, reactionless and wear-free. Thanks to their high sensitivity and the ability to detect electrically conductive as well as non-conductive objects, they can be used in many different applications.

## Ultrasonic Sensors

Ultrasonic sensors detect a multitude of objects contactless and wear-free with ultrasonic waves. Our ultrasonic sensors are available in many different designs, ranges, cone angles and output types.

## Magnetic Field Sensors

Magnetic field sensors are used in particular for contactless detection of the piston position in pneumatic cylinders.

## Linear Position Sensors

Path measurement can be solved with various sensors. The inductive linear position sensors operate contactless and wear-free according to a revolutionary measuring principle.

## Encoders

Reliably monitor rotational speed or detect the position, direction and angle of rotation — encoders (also: rotary encoders) can be used for numerous industrial measuring tasks.

## Inclinometers

Our rugged inclinometers of the Q20L60 and Q42 series capture almost any inclination and can also be used in systems implementing fast motions or subjected to shocks.

## Inclinometers

The extensive product portfolio of pressure sensors from Turck offers solutions for industrial applications and mobile equipment. Various different process connections, output signals and a huge variety of pressure ranges mean that the ideal sensor can be found for any application.



## Signal Conditioning interface

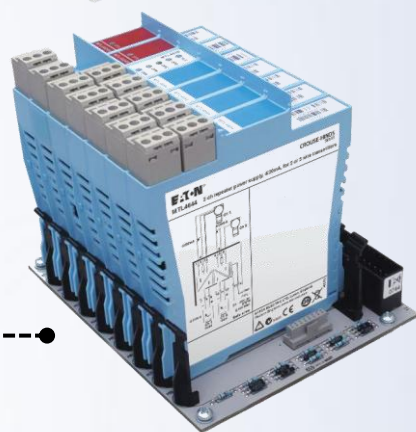
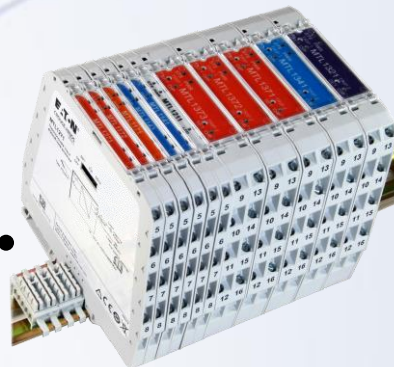
### Signal Isolators

The MTL1000 range of signal conditioning isolators and accessories are designed to help protect field instruments and control systems to provide safe, reliable process communications. This cost-effective solution offers significant savings with its embedded DIN-rail mounted power-bus and compact design.

### Backplane mounted Signal Isolators

The MTL4600 range offers a high level of signal isolation for installations where multiple loops on a common connection are not desirable.

Signal isolation provides excellent protection against surges, common faults and noisy environments. It also eliminates the risk of earth loops between different areas of the plant, which, if not isolated, can cause significant errors or failures under fault conditions.



## Process Safety and automation

### Backplane mounted Intrinsic Safety Isolators

The MTL4500 range is the next generation of backplane mounting intrinsic safety isolators with industry leading features and performance in a single package.

It is designed with the requirements of system vendors in mind, for 'project focused' applications such as Distributed Control Systems (DCS), Emergency Shutdown Systems (ESD) and Fire and Gas monitoring (F&G).

### DIN-rail mounted Intrinsic Safety Isolators

The MTL5500 range of intrinsic safety isolators are DIN-rail mounting and meet the needs of the IS interface market for "application focused" projects. It has a slim, compact housing and the range of module options contains both single and multiple channel devices.

### MTL SUM5 Smart Universal Marshalling

MTL SUM5 offers a single cabinet design, with 'plug and play' configurable modules for the five key marshalling functions. This eliminates the need for intricate wiring to interconnect the components, ultimately improving uptime and reducing the cost of wiring, installation and maintenance.

One MTL SUM5 universal ADIO isolator module supports the functionality provided by 20 different MTL4500 single channel modules, while the configurable parameters enable support for an even wider range of applications.



## Process Safety and automation

### HART® Multiplexers

The MTL4850 HART® multiplexer provides a simple interface between smart devices in the field, control/safety systems and HART® instrument management software.

Essentially, this gives 4 x 8 channel multiplexers in one compact housing, enabling simultaneous communication with several field devices through one serial link.

### HART® Multiplexers

The new MTL4851 and MTL4852 HART® connection system provides a simple interface between smart devices in the field, control systems and HART® instrument management software.

The system is based on 16-channel modularity to provide a compact, easily configurable and expandable system.

## Surge Protection

### Fieldbus trunk and spur surge protection - DIN rail

MTL FP32 devices provide surge protection along the trunk or spurs of fieldbus systems, preventing damage to the associated electronics such as terminators, spur blocks and the bus control equipment.

### Digital & Analogue I/O surge protector

MTL IOP offers protection for both digital I/O and analog I/O. This is the most economical surge protection solution for I/O offered by our business. Its high packing density, high protection level and low price combine to make the IOP a value solution.

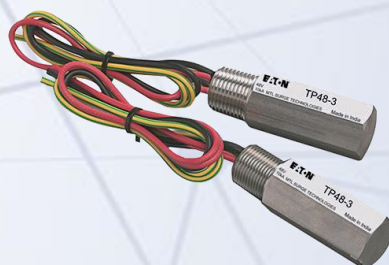
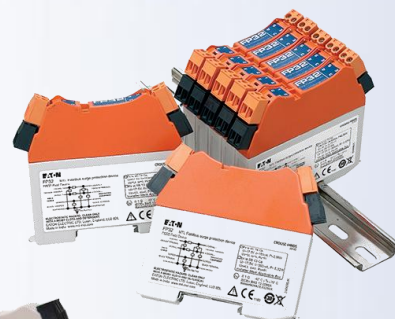
### AC and DC mains filter and surge protector

MTL MA15 range of surge protection devices protects electronic equipment and computer networks against the effects of 'noise pollution' induced in mains power supplies. MA15 units 'clean up' the effects of industrial noise and surges caused by lightning, switching devices, thyristor controls, transmission system overloads and power-factor correction circuits.

### Surge Protection for Field Instruments.

MTL TP32 surge protection device is specifically designed to protect process transmitters and devices on fieldbus systems.

MTL TP48 surge protection device safeguards field-mounted process transmitters where it matters, right at the unit. After a simple installation (the TP48 screws into an unused conduit entry, with no additional modification), it provides high-level protection against surges and transients while normal operation remains unaffected.



## Fieldbus Equipment

### Intrinsically safe fieldbus barriers

MTL fieldbus barriers provide intrinsically safe spur connections from a high-energy trunk, for connection to suitably certified Foundation™ fieldbus H1 instruments. Our intrinsically safe fieldbus barriers are available in a variety of configurations and materials, maximizing application flexibility.

### Megablock range of wiring hubs

MTL Megablock is a DIN-rail mounted passive hub designed for use in FOUNDATION™ fieldbus H1 and Profibus PA networks. Megablocks minimize hand wiring and allow individual devices to be added to and removed from the segment without disrupting network communication.

Hazardous area approvals permit installation in a variety of configurations in Zone 1 or 2 and Division 1 or 2.

### Redundant Field Power Supplies

MTL Redundant Fieldbus Power Supplies are designed to provide redundant power for up to eight FOUNDATION™ fieldbus H1 segments and are suitable for use with all fieldbus systems. They are optimized for use in general purpose and hazardous area High Energy Trunk architectures which, with the appropriate FieldPlus wiring components, support fieldbus devices using all hazardous area protection techniques.

### Redundant FISCO Power Supplies

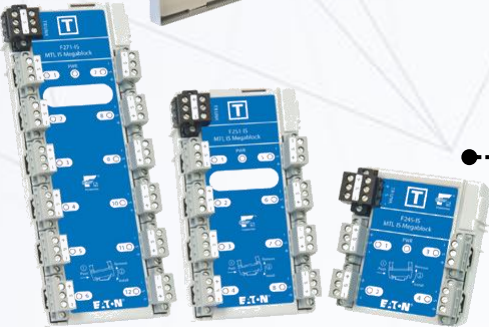
MTL 910x FISCO power supply systems provide an intrinsically safe field network for Foundation fieldbus systems in hazardous areas. The output of the power supply modules complies with the Fieldbus Intrinsically Safe Concept (FISCO) model, in accordance with IEC standard 60079-27. The key advantages of FISCO over earlier 'Entity' model installations to FF-816 are higher available field current and reduced safety documentation, while retaining the ability to conduct maintenance while energized and without "gas clearance".

### Fieldbus Test Equipment

MTL FBT-6 Fieldbus Monitor is used to examine the operation of a live Foundation fieldbus network without interfering with its operation. It can be used to examine the operation of a live Profibus-PA segment without interfering with its operation. These monitors are intended for maintenance personnel to verify network operation or to troubleshoot an errant network.

### Fieldbus Trunk and Spur Surge Protection

surge protection devices prevent surges and transient over-voltages conducted along the Trunk or Spurs of fieldbus systems from damaging the associated electronics such as power supplies, device couplers, fieldbus barriers, terminators, and the bus control equipment.



**Eaton**  
Powering Business Worldwide

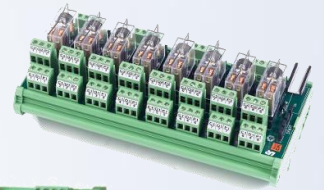




# Field Interface, Connectivity & Industrial Networking.

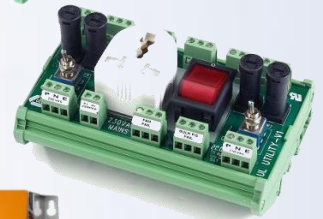
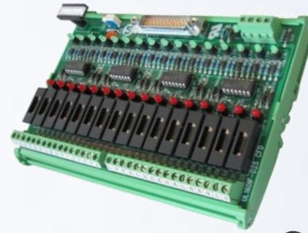
## Relay Interface Module

Standard Relay Module  
Slime Relay Module  
Solid State Relay Module



## PLC / DCS Specific Field Interface Module

Analog Input Field Interface Module  
Analog Output Field Interface Module  
Digital Input Field Interface Module  
Digital Output Field Interface Module  
Prefab Cables



## Panel Accessories

Utility Module  
Fan Fail Detection Module  
Power Distribution Module  
Diode O-ring Module  
Interface Modules  
Modular Wiring Solutions  
Power Supply



## Profibus and ProfiNet Solution

Profibus and Profinet Connector  
Profibus and Profinet Switch / Hub / Gateway Module/ Coupler  
Profibus Diagnostic Tools kits  
Profibus and Profinet Repeater  
Ultrasonic sensors detect a multitude of objects contactless and wear-free with ultrasonic waves. Our ultrasonic sensors are available in many different designs, ranges, cone angles and output types.



## Media / Protocol Gateway

Serial to FO  
Ethernet to FO  
Serial to Seral  
Serial to Ethernet  
Serial to USB  
IEC Gateway  
BACnet Gateway  
Modular Gateway etc...



## Ethernet

Modbus Gateway  
Managed & Unmanaged Ethernet Switches  
POE Ethernet Switch  
IEC 61850 Switch  
C1D1 / ATEX Ethernet Switch  
EN50155 Compliant Switch for Railway  
Ethernet Extender  
Wireless Access Point and Bridge  
Industrial Cellular Router, Modem and Gateway





# Services

## Hardware & Software Engineering

**We are aware of the requirements of different domains and have designed the control system hardware for different sectors.**

- System Architecture Design.
- Power Consumption and Head Load Calculation.
- Panel design for system, Marshalling, Power Distribution Cabinets and Auxiliary Consoles.
- Panel Wiring Drawings & Loop Drawings.

**With an expert pool of engineers having capability in DCS, PLC, RTU, HMI, SCADA, OPC, Historian, IIOT, Software solutions and Safety Systems following services are provided.**

- Design & Engineering.
- Graphic, Logic, Control loop, Safety Interlock development.
- Recipe and Batch Programming.
- Integration with various control system.
- SCADA, HMI design and Development.
- OPC, Historian, IIOT Data Management Solutions and services

**With an expert pool of engineers, we provides following services:**

- Skilled Engineers for various Automation Systems.
- Engineering Services for Project Engineering, Commissioning, and Maintenance.
- SOW Contract Engineers (for Long and Short Site Deputation).
- O&M Service Contracts.
- Customized Site Services



# Our Key Customer

End-user, OEM, System Integrator & Panel Builder



etc....

A large, stylized teal telephone handset is positioned vertically on the left side of the page. It has a circular receiver at the top and a circular base at the bottom, connected by a coiled cord. The background is a light blue gradient with faint geometric lines.

# Contact

## GLOBAL SOLUTIONS

*Group Company of Glosol Innovations & Technologies Pvt. Ltd.*



+91 75748 74640

+91 90990 12049



[info@gs-bharat.com](mailto:info@gs-bharat.com)



[www.gs-bharat.com](http://www.gs-bharat.com)



SF10, Shivam Trade Center,  
Atladra Manjalpur Road,  
Atladara, Vadodara – 12